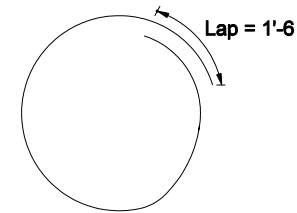
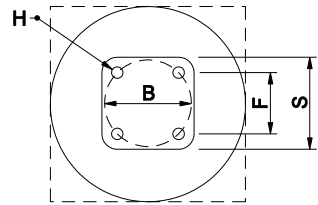
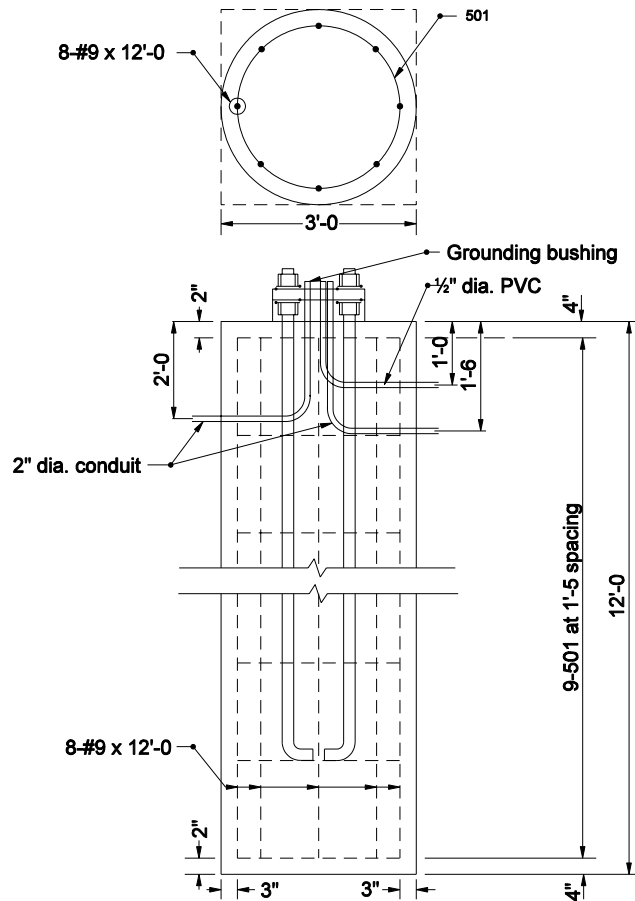


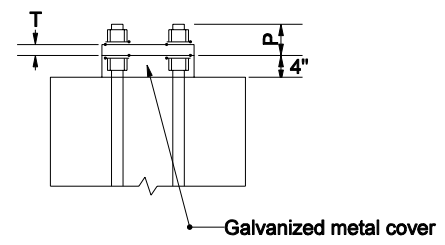
**WOOD POLE
GUY ALIGNMENT**

**STEEL STRAIN POLE
ANCHOR BOLT ORIENTATION**

INDIANA DEPARTMENT OF TRANSPORTATION	
POLE ALIGNMENT	
JUNE 1996	
STANDARD DRAWING NO. E 805-SGSC-01	
DETAILS PLACED IN THIS FORMAT 11-15-99	
	/s/ Anthony L. Uremovich 11-15-99 DESIGN STANDARDS ENGINEER DATE
	/s/ Firooz Zandi 11-15-99 CHIEF HIGHWAY ENGINEER DATE
	ORIGINALLY APPROVED 6-03-96



501 x 9'-4



BASE PLATE AND ANCHOR BOLT DATA

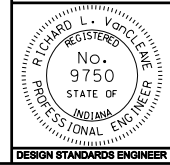
Anchor bolts	B	F	H	P	S	T	Pole size	Foundation
2 1/4" x 8'-0	1'-10	1'-3 1/2	2 3/4"	4 3/4"	1'-11	2 1/2"	1'-3 x 30 ft 1'-5 x 36 ft	3'-0 x 12 ft

INDIANA DEPARTMENT OF TRANSPORTATION

STEEL SIGNAL STRAIN POLE FOUNDATION DETAILS

SEPTEMBER 2004

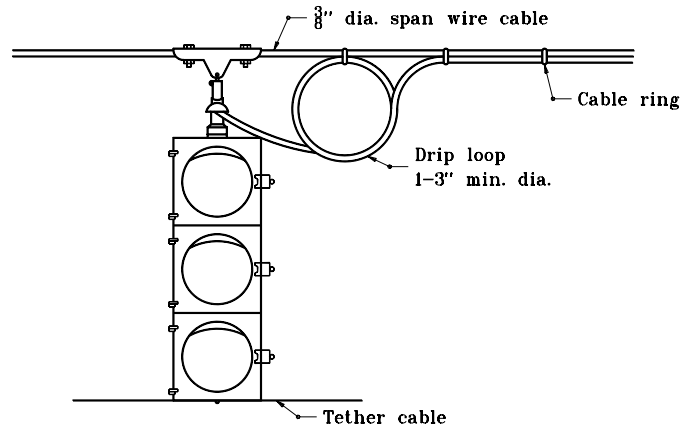
STANDARD DRAWING NO. E 805-SGSC-02



/s/ Richard L. VanCleave 9-01-04
DESIGN STANDARDS ENGINEER DATE

/s/ Richard K. Smutzer 9-01-04
CHIEF HIGHWAY ENGINEER DATE

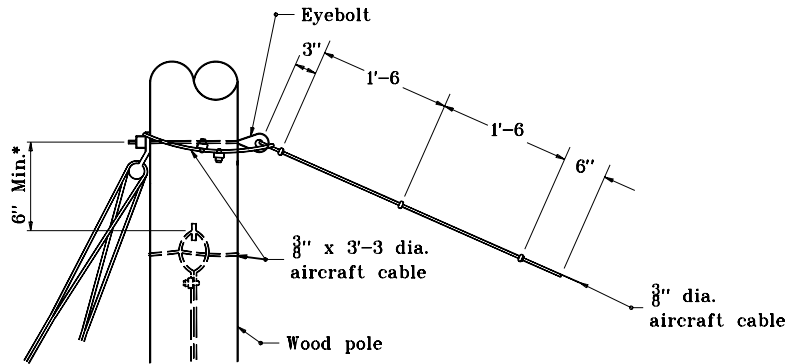
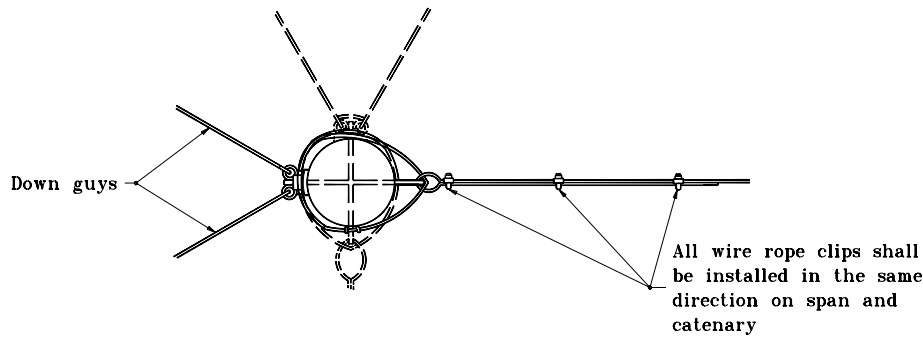
DESIGN STANDARDS ENGINEER



SPAN-HEAD ATTACHMENT

GENERAL NOTES

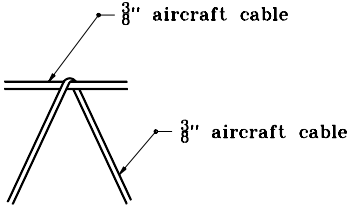
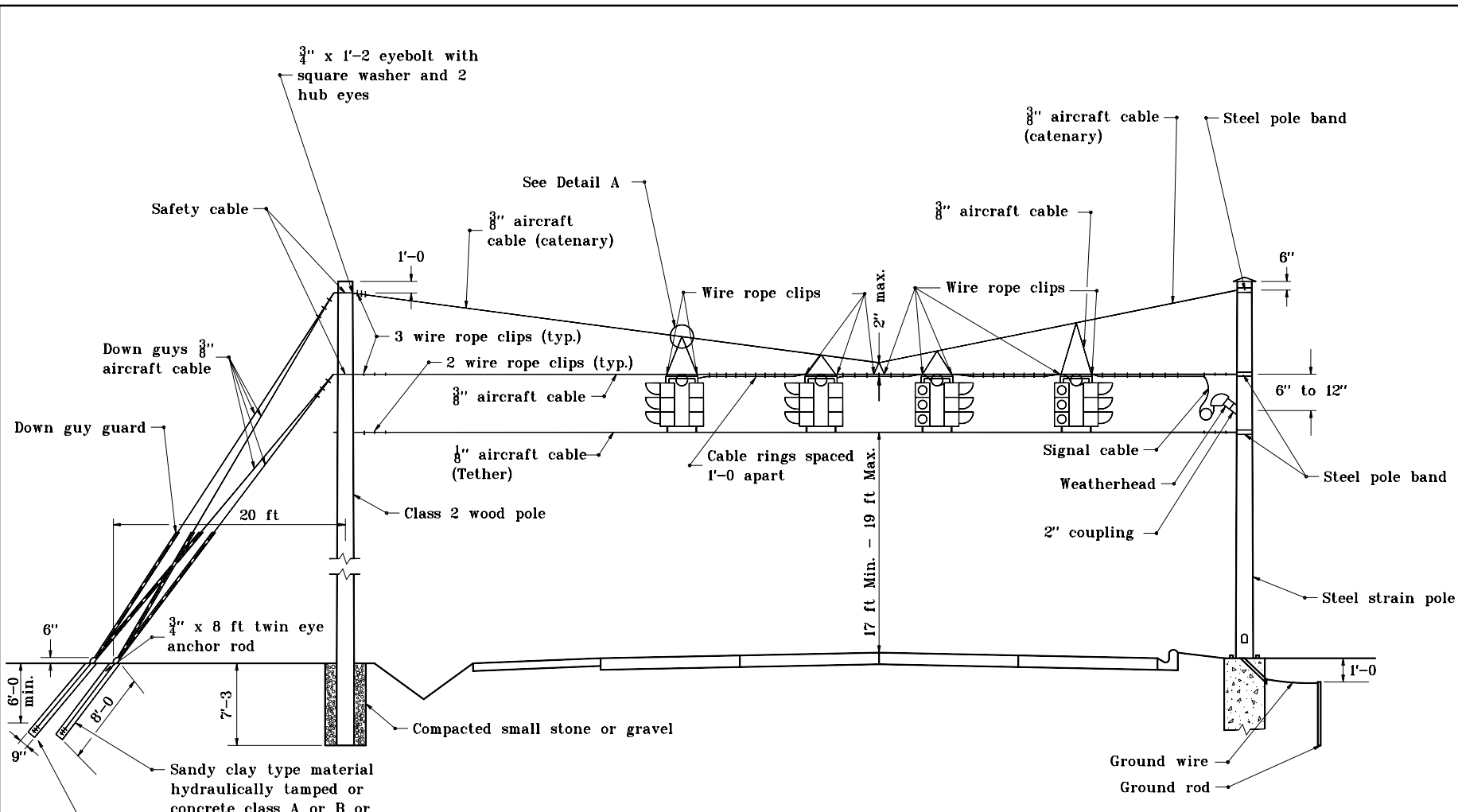
1. Installation is the same for steel strain poles except pole bands will be used.
2. Aircraft cable shall use a heavy closed wire rope thimble at contact with pole bands.



SAFETY CABLE AND EYE BOLT DETAIL

* If more than one catenary is attached to pole

INDIANA DEPARTMENT OF TRANSPORTATION	
CABLE SPAN ATTACHMENT	
SEPTEMBER 1998	
STANDARD DRAWING NO. E 805-SGSC-03	
	DETAILS PLACED IN THIS FORMAT 11-15-99 /s/ Anthony L. Uremovich 11-15-99 DESIGN STANDARDS ENGINEER DATE
DESIGN STANDARDS ENGINEER	/s/ Firooz Zandi 11-15-99 CHIEF HIGHWAY ENGINEER DATE ORIGINALLY APPROVED 9-01-98



DETAIL A

INDIANA DEPARTMENT OF TRANSPORTATION	
SPAN, CATENARY & TETHER DETAIL	
SEPTEMBER 2000	
STANDARD DRAWING NO. E 805-SGSC-04	
	/s/ Anthony L. Uremovich 9-01-00 DESIGN STANDARDS ENGINEER DATE
	/s/ Firooz Zandi 9-01-00 CHIEF HIGHWAY ENGINEER DATE
DESIGN STANDARDS ENGINEER	